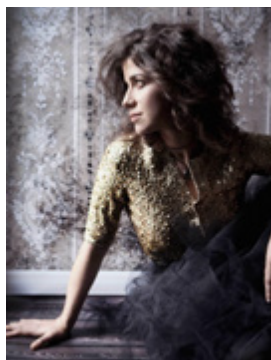




40TH ANNIVERSARY SEASON





OUR 40TH SEASON OF WORLD-CLASS MUSIC CLOSE TO HOME

Featuring:

- All-Subscriber Happy 40th! pre-concert celebration Sept. 27
- World-Class Soloists all season
- Stile Antico in “The Golden Renaissance”
- 2 World Premieres and an American Premiere
 - A new work composed for the Season Opener by Dwayne S. Milburn
 - A co-commissioned work by Dawn Norfleet
 - Richard Danielpour’s Piano Concerto No. 4
- Bonus concert by organist Nathan Laube celebrating the Fisk Organ’s 40th anniversary

The St. Matthew’s Music Guild invites you to celebrate with us as we enter our fifth decade of “World-Class Music Close to Home.” Forget about driving across town. Enjoy free and easy parking, free intermission refreshments and some of the best music-making on the Westside with great acoustics in an intimate and casual setting.



SEPT 27, 2024 |

JAN BERRY BAKER PLAYS IBERT

World-renowned saxophonist Jan Berry Baker joins the Chamber Orchestra at St. Matthew’s for music by Ibert, plus the world premiere of a new work by Dwayne S. Milburn and Mendelssohn’s “Italian.” Pre-concert Happy 40th! Party on the patio for all 2024-2025 subscribers.



NOV 1, 2024 |

ALL-BEETHOVEN CONCERT WITH ROBERT THIES

Robert Thies returns to the SMMG for Beethoven’s Third Piano Concerto plus the mighty Fifth Symphony and Creatures of Prometheus Overture. Gala Supper for subscribers at the Silver Patron level and above prior to the concert.



Handel

DEC 6, 2024 |

ANNUAL HOLIDAY CONCERT

The Chamber Orchestra and Choir of St. Matthew’s Parish present baroque favorites of the season. Purcell’s buoyant The Gordian Knot Untied, Arcangelo Corelli’s Christmas Concerto, Vivaldi’s effervescent Gloria and our traditional audience sing-along of Handel’s Hallelujah Chorus.



Purcell



**FEB 14, 2025 |
VALENTINE'S DAY LOVE
SONGS**

Pianist David Kaplan, soprano Liv Redpath (pictured), violinist YuEun Gemma Kim and friends offer a program of romantic and soulful pieces appropriate for the occasion. Music of Schubert, Brahms Shaw, and Copland.



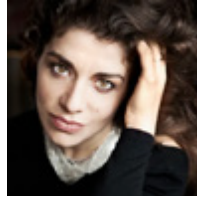
**MAY 4, 2025 |
BONUS CONCERT –
NATHAN LAUBE**

Organist Nathan Laube, recognized as one of the finest organists of his generation, joins us to celebrate the 40th Anniversary of the Music Guild and the C.B. Fisk organ at St. Matthew's Church (Sunday at 4pm).



**MAR 14, 2025 |
BOURIAKOV AND A
NORFLEET PREMIERE**

The world premiere of a new Music Guild commission by Los Angeles-based composer Dawn Norfleet plus the LA Phil's Principal Flute, Denis Bouriakov (pictured) in music of Saint-Saëns and Mozart.



**MAY 30, 2025 |
INNA FALIKS –
DANIELPOUR PREMIERE**

Celebrated as "adventurous and passionate" (The New Yorker), Ukrainian-born pianist Inna Faliks returns to St. Matthew's to perform the West-coast premiere of Richard Danielpour's Piano Concerto No. 4 (A Hero's Journey). Plus music of Rossini and Stravinsky.



**APR 4, 2025 |
STILE ANTICO – THE GOLDEN
RENAISSANCE**

The twelve-member, London-based Stile Antico has thrilled audiences on four continents with their "fresh, vibrant and moving performances" (NY Times) of Renaissance masterworks. You won't want to miss what BBC Music Magazine calls "a magnificent display of the very best kind" of choral singing.

Scan to learn more



or visit musicguildonline.org



Dwayne Milburn



Jan Berry Baker

SEASON OPENER

Sept 27

*Dwayne S. Milburn, conductor and composer –
Jan Berry Baker, saxophone*

**September 27, 2024 – Season Opener
Jan Berry Baker, saxophone
Dwayne S. Milburn, conductor and
composer – The Chamber Orchestra
at St. Matthew’s**

Saxophonist Jan Berry Baker makes her first appearance with the Chamber Orchestra at St. Matthew’s, performing Jacque Ibert’s sparkling Concertino

da Camera and William Grant Still’s lush Romance for Alto Saxophone and Strings. The program begins with a celebratory new work by our own Dwayne S. Milburn and concludes with Mendelssohn’s vivacious “Italian” Symphony. *Underwritten by the St. Matthew’s Music Guild’s Endowment Fund Pre-concert Happy 40th! celebration on the patio for all 2024-2025 subscribers*

MORE INFO



www.instagram.com/janberrybaker/?hl=en



janberrybaker.com



www.facebook.com/jan.b.baker

ROBERT THIES AND BEETHOVEN'S FIFTH

November 1, 2024

Hailed by the Los Angeles Times as a pianist of "unerring, warm-toned refinement, revealing judicious glimmers of power," Robert Thies returns to St. Matthew's to join us as we spend an evening with the music of Beethoven including the Third Piano Concerto, Fifth Symphony, and Creatures of Prometheus Overture. *Underwritten by a generous grant from the Colburn Foundation*



www.instagram.com/thies_pianist/?hl=en



robertthies.org



robertthies.org

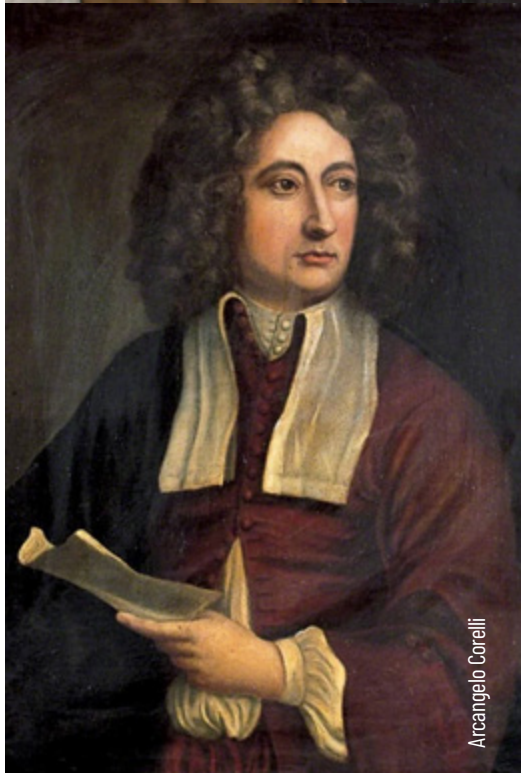
ANNUAL HOLIDAY CONCERT

December 6, 2024

Music Director and Conductor Dwayne S. Milburn leads the combined forces of the Chamber Orchestra and Choir and Soloists of St. Matthew's Parish in Vivaldi's effervescent Gloria. Music of Purcell and Corelli and our traditional audience sing-along of Handel's Hallelujah Chorus round out the program.

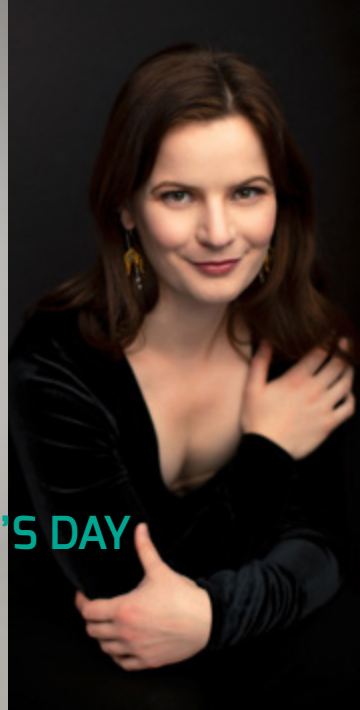


Robert Thies



Arcangelo Corelli

Become a member | Subscribe to the 2024/2025 Season | 310.573.7422



“LOVE SONGS” FOR VALENTINE’S DAY

Feb 14

David Kaplan, YuEun Gemma Kim, Liv Redpath and friends offer an evening of songs and chamber music appropriate for Valentine’s Day

February 14, 2025 – “Love Songs” for Valentine’s Day

Pianist David Kaplan returns for a concert featuring violinist YuEun Gemma Kim, soprano Liv Redpath, and friends. The New York Times noted Kaplan’s “striking imagination and creativity” and the Berliner

Umschau said of Redpath “[she possesses] “such a radiant voice, effortless even in the highest register with breathtaking coloratura, the likes of which have not been heard for a long time.” Music of Schubert, Brahms and Copland.

Underwritten by a generous gift from the Estate of Mary Calfas Janos

MORE INFO



davidkaplanpiano.com



livredpath.com



www.facebook.com/liv.redpath



www.instagram.com/liv.redpath/?hl=en



photo: Tom Pease

DENIS BOURIAKOV PLUS A DAWN NORFLEET PREMIERE

Mar 14

LA Phil Principal Flute Denis Bouriakov plays Mozart and Saint-Saëns plus a world premiere by Dawn Norfleet

March 14, 2025 – Bouriakov and a Dawn Norfleet world premiere

The Chamber Orchestra presents the world premiere of a new work by Dawn Norfleet and Gabriela Lena Frank's *Leyendas: An Andean Walkabout*. Described by the Los Angeles Times as "an expressively eloquent soloist," LA Phil Principal

Flute, Denis Bouriakov, joins the Chamber Orchestra for Mozart's Flute Concerto No. 1 and Camille Saint-Saëns' Introduction and Rondo Capriccioso.

Ms. Norfleet's composition is a co-commission by St. Matthew's Music Guild and the Gabriela Lena Frank Creative Academy of Music

MORE INFO



bouriakov.com



www.facebook.com/denisbflute



www.instagram.com/denisflute/?hl=en

Become a member | Subscribe to the 2024/2025 Season | 310.573.7422



STILE ANTICO – THE GOLDEN RENAISSANCE

Apr 4

*“A magnificent display of the very best kind” (BBC Magazine)
– music of Tallis, Byrd, Victoria and more*

April 4, 2025 – Stile Antico and “The Golden Renaissance”

The twelve-member, London-based Stile Antico has thrilled audiences on four continents with their “fresh, vibrant and moving performances” (NY Times) of Renaissance masterworks. You won’t want to miss one of the finest choral ensembles on the planet as they take you on a musical journey through sixteenth-century Britain, France, Spain, and Italy with

music by Tallis, Gibbons, Victoria, Byrd, Josquin, Taverner and Allegri. *Underwritten by a generous gift from James and Annabel Montgomery* Major support for the Music Guild’s Choral Arts Initiative is provided by Gordon and Karen Dressler and founding and sustaining members of the the Music Guild’s Choral Arts Initiative *As we expect the concert to sell out, priority seating will be offered to Music Guild subscribers.*

MORE INFO



stileantico.co.uk



www.facebook.com/stileantico



www.instagram.com/stile_antico/?hl=en

NATHAN LAUBE, ORGANIST

Bonus Concert - free to all 2024-2025 subscribers

May 4, 2025, 4pm.

In celebration of the Music Guild's 40th Anniversary and the 40th Anniversary of the dedication of The Parish of St. Matthew's C.B. Fisk Organ, we are pleased to co-host a special Sunday afternoon recital by Nathan Laube, one of the foremost organists of his generation. C.B. Fisk's Opus 86 tracker pipe organ was dedicated in a series of recitals in May, 1985, and we are thrilled to invite concert organist Nathan Laube to help us mark the occasion.

Underwritten by the St. Matthew's Music Guild's Endowment Fund



www.instagram.com/nathanlaube/?hl=en



nathanlaube.com



www.facebook.com/nathan.laube

INNA FALIKS PLAYS DANIELPOUR

May 30, 2025

Celebrated as "adventurous and passionate" (The New Yorker), Ukrainian-born pianist Inna Faliks returns to St. Matthew's to perform the West-coast premiere of Richard Danielpour's Piano Concerto No. 4 (A Hero's Journey). Rossini's sparkling Tancredi Overture and Stravinsky's driving Danse Concertantes round out the evening and the season.



www.instagram.com/innafalikspiano/?hl=en



innafaliks.com



www.facebook.com/innafaliks





OUR COMMUNITY CONCERTS

The Music Guild presented thirty live community concerts during the 2023 - 2024 season and we plan to do even more in our 40th Anniversary Season. What a great way to celebrate 40 years! Performance venues include several centers operated by LA Family Housing (LAFH) throughout the San Fernando Valley. We have been particularly touched by the reception we have received at The Arroyo, a shelter and center for women only (where we sponsor performances by women-only ensembles). We also perform regularly at Neighborhood Youth Association and monthly (every first Thursday) at Bread and Roses Café in Venice.

We present keyboardists, guitarists and singers, woodwind, string, and brass ensembles, mariachi bands, jazz ensembles, R & B performers and a diverse group of performers featuring folk and pop music from diverse cultures.

Many members of The Chamber Orchestra at St. Matthew's participate in the Music Guild's

Community Concerts. Other featured performers include the Mariachi Divas, Adelaide Pilar, Angelo Salazar, Lorenzo Sanchez and Spencer Artwick and jazz artists Kirsten Edkins, Lolly Allen and Kait Dutton.

Recently, following a performance at LAFH's Arroyo, Kirsten Edkins wrote, *"I have had many high-profile gigs (from Lady Gaga...to Tom Hanks, Cher, Sophia Loren, and many other stars). The concerts at the Arroyo have meant leaps and bounds above the others. To be able to play for women who have been through hell, are hurting and on their way to a new start means the world to me. Thank you for the opportunity!"*



St. Matthew's Music Guild is supported, in part, by the Los Angeles County Board of Supervisors through the Los Angeles County Department of Arts and Culture.

SUBSCRIBE OR DONATE

Enjoy the satisfaction of supporting world-class music and life-changing outreach in the community.

Member (\$285)

- ✓ One Season Pass (one admission to eight concerts – a \$30 saving*)
- ✓ Acknowledgment in Music Guild programs

Subscriber (\$570)

- ✓ Two Season Passes (two admissions to eight concerts – a \$60 saving*)
- ✓ Acknowledgment in Music Guild programs

Silver Patron (\$900)

- ✓ Two Season Passes
- ✓ Acknowledgment in Music Guild programs
- ✓ November 1 Pre-Concert Supper

Gold Patron (\$1,200)

- ✓ Two Season Passes
- ✓ Acknowledgment in Music Guild programs
- ✓ November 1 Pre-Concert Supper

*Single tickets at the door: \$45

Angel (\$3,000)

- ✓ Two Season Passes
- ✓ November 1 Pre-Concert Supper
- ✓ Recognition as Orchestra Principal Chair sponsor

Seraphim (\$5,000 and above)

- ✓ Two Season Passes
- ✓ November 1 Pre-Concert Supper
- ✓ Recognition as Concert Underwriter

Donor

I would like to make a fully tax-deductible donation in the amount of \$_____.

All 2024-2025 subscribers are invited to a Happy 40th! pre-concert celebration on the patio prior to our Season Opener on September 27

Payment/Acknowledgement

Subscribe or donate online with your credit card at www.MusicGuildOnline.org or mail this form in with your payment. Call **310-573-7422** or e-mail info@MusicGuildOnline.org for additional information.

Payment type: check enclosed credit card AMOUNT: \$ _____

Credit Card Number _____ Exp. Date _____

Signature _____ Security Code _____

Name(s) _____

Print as you would like it to appear in all Music Guild program listings.

Address _____

City, State, Zip _____

Phone: Home (_____) _____ Office/Cell(_____) _____

Email _____

Contact Us

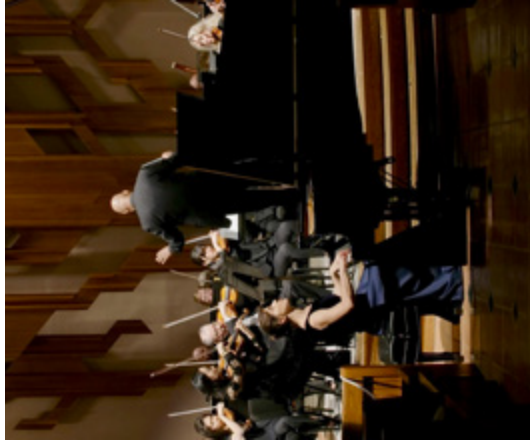
E-mail: info@MusicGuildOnline.org

Mailing Address and Concert Location:
St. Matthew's Music Guild
1031 Bienvenida Ave
Pacific Palisades, CA 90272



Non-profit
Organization
U.S. Postage
PAID
Los Angeles, CA
Permit 1417

2024-2025 SEASON



**WORLD-CLASS MUSIC
CLOSE TO HOME**